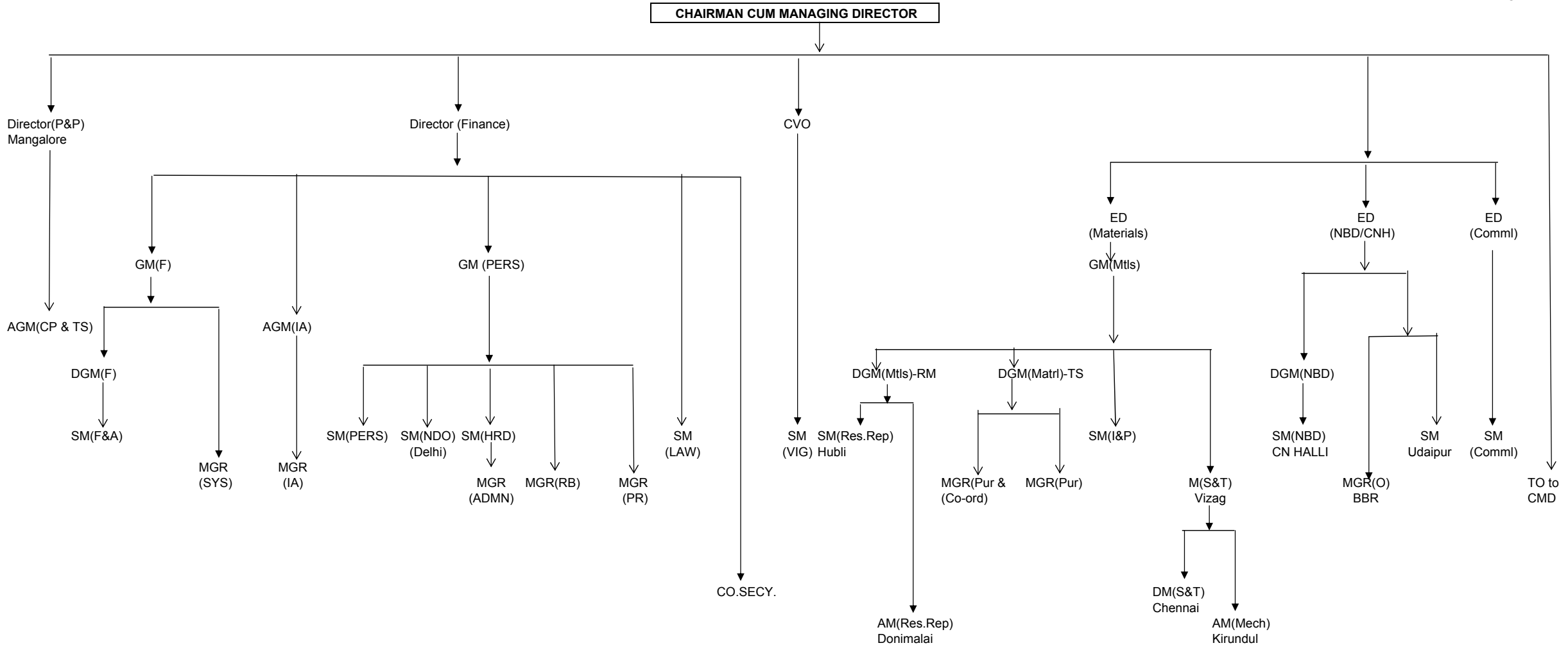
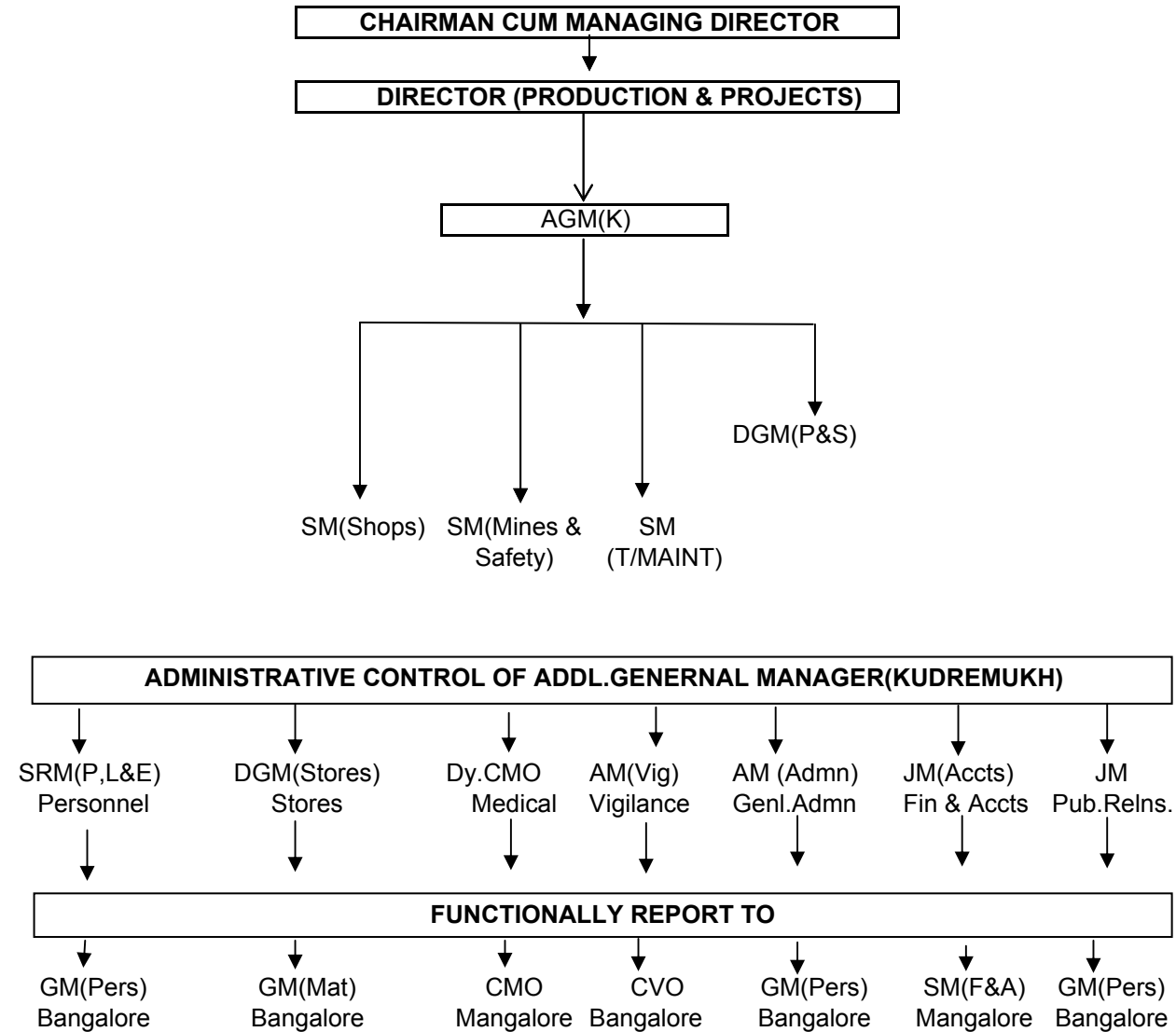


ORGANISATION CHART - BANGALORE

ANNEXURE - I



**ORGANISATION CHART - KUDREMUKE**

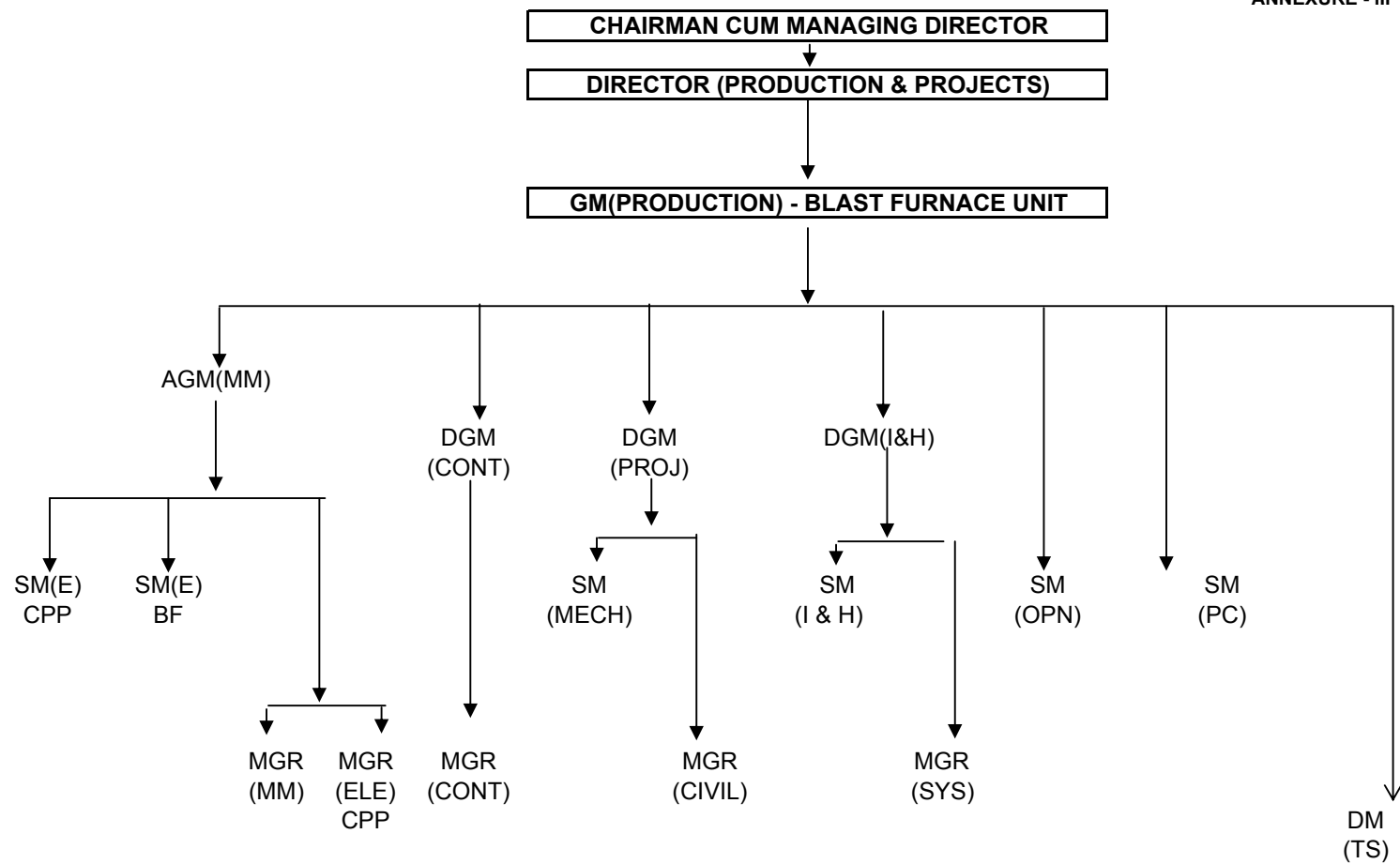


\*In respect of L&E section matters he will functionally report to AGM(K).

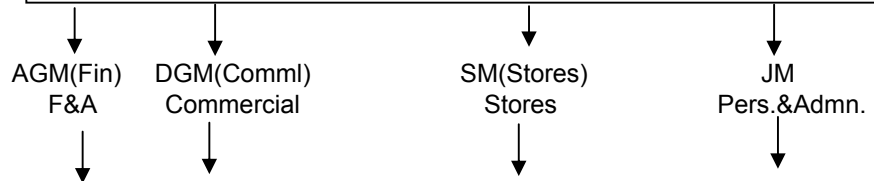


**ORGANISATION CHART - BF UNIT - MANGALORE**

ANNEXURE - III



**ADMINISTRATIVE CONTROL OF DIRECTOR(P & P)**



**FUNCTIONALLY REPORT TO**

